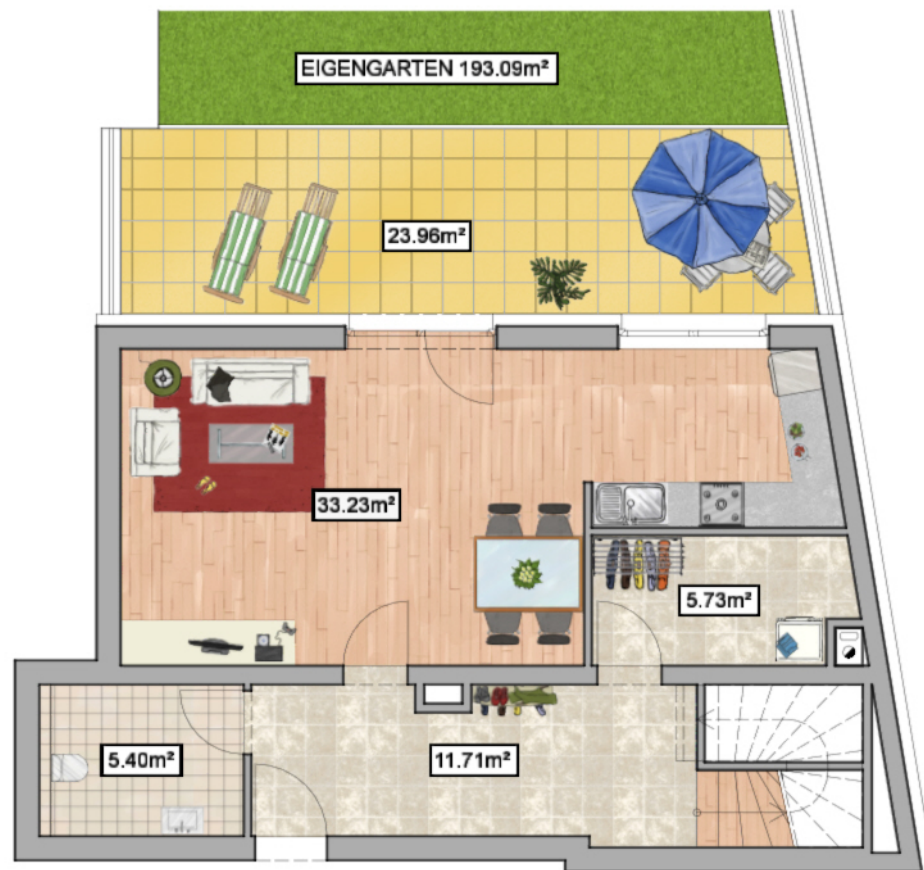
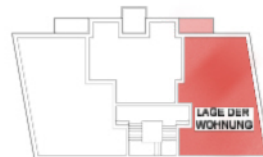
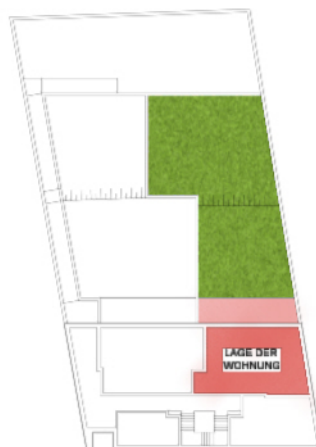


WOHNHAUS 14., HÜTTELDORFER STRASSE 263



NORD



LAGEPLAN 1:750
(ERDGESCHOSS UND 1. STOCK)

GARTENMAISONETTEWOHNUNG TOP 2:

129.82m² + TERRASSE 23.96m² + BALKON 5.03m² + EIGENGARTEN 193.09m²

KAUFPREIS € 825.000,00

MASSTAB 0 1 2 3 4 5m